



Coordinated Entry Metric Report



Section Guide

ACCESS: Where do people access Coordinated Entry? How many households were triaged using Diversion? How many households were triaged using Homeless Prevention?

PRIORITIZATION: Who is making it onto the Prioritized List? How many resources became available? How many households were prioritized?

REFERRAL: Who is being referred through Coordinated Entry? Who enrolled in housing through Coordinated Entry? Average time for enrollment and number of referrals?

PROGRAM OPERATIONS: Who is being housed through Coordinated Entry? How long does it take for referrals to be acknowledged? How long does it take to be housed once referred?



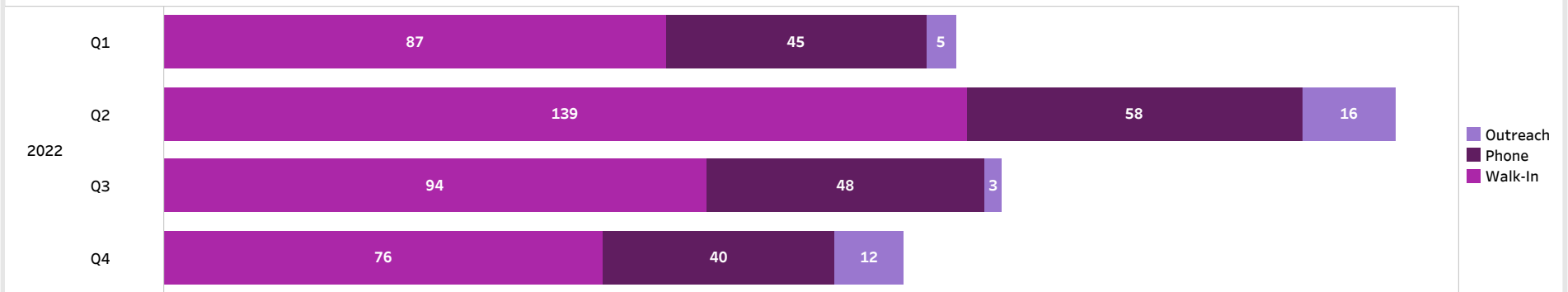
ACCESS

Diversion Triage Summary: Date of Service Jan - Dec 2022

Diversion Triage by Population Type

Q1	Total 2022				Family Household 2022				Single Adult 2022				Veteran 2022				Youth 2022			
	Q2	Q3	Q4		Q1	Q2	Q3	Q4	Q1	Q2	Q3	Q4	Q1	Q2	Q3	Q4	Q1	Q2	Q3	Q4
145	231	151	136		30	57	53	51	96	145	91	75	9	8	6	7	13	19	24	12

Diversion Triage by Contact Type



Diversion Triage by Age Group

Age	2022			
	Q1	Q2	Q3	Q4
0	0	0	0	0
5	0	0	0	0
10	0	0	0	0
15	3	4	3	3
20	11	20	24	14
25	11	24	14	6
30	18	27	24	25
35	24	30	19	19
40	16	21	20	18
45	11	24	11	12
50	15	33	13	12
55	21	27	8	16
60	9	17	10	7
65	4	3	3	2
70	1	1	1	1
75	1			1
80			1	
85	0			



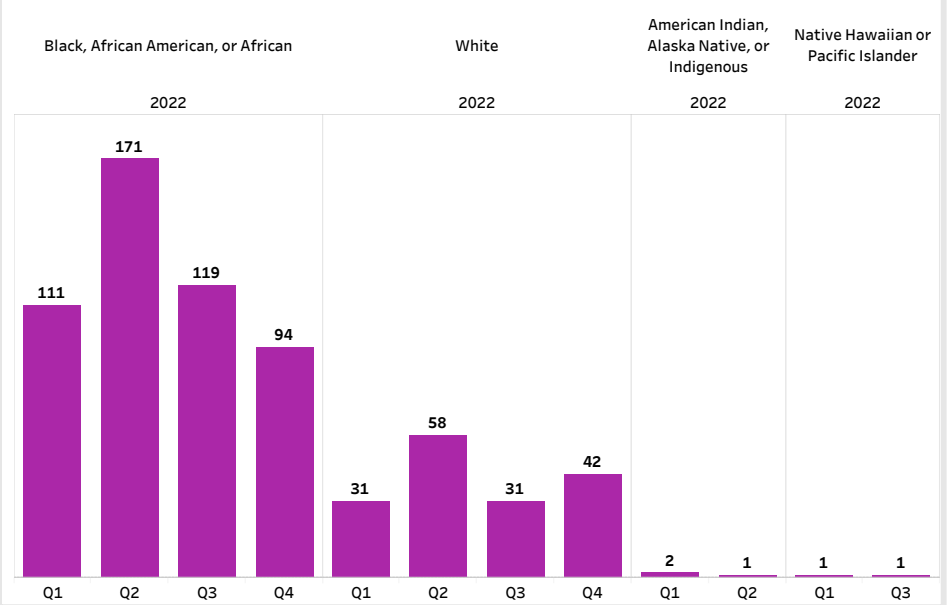
ACCESS

Diversion Triage Summary: Date of Service Jan - Dec 2022

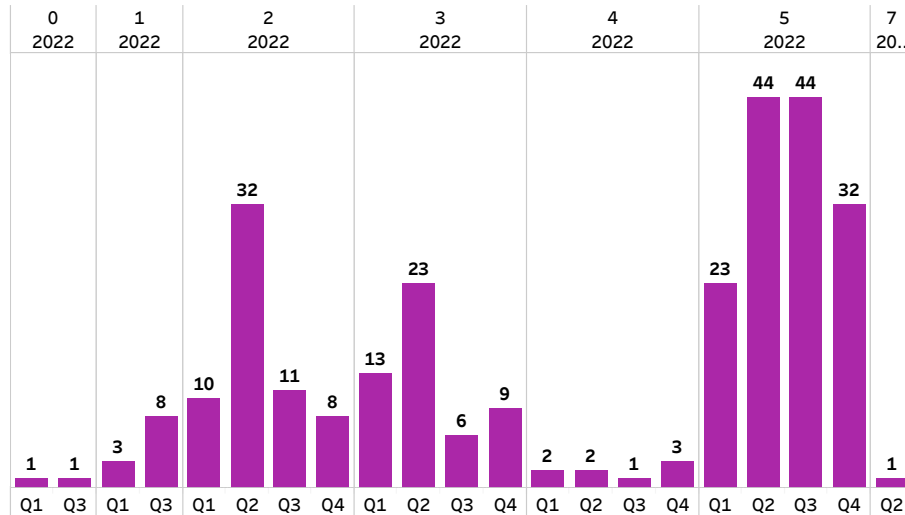
Diversion Triage by Gender



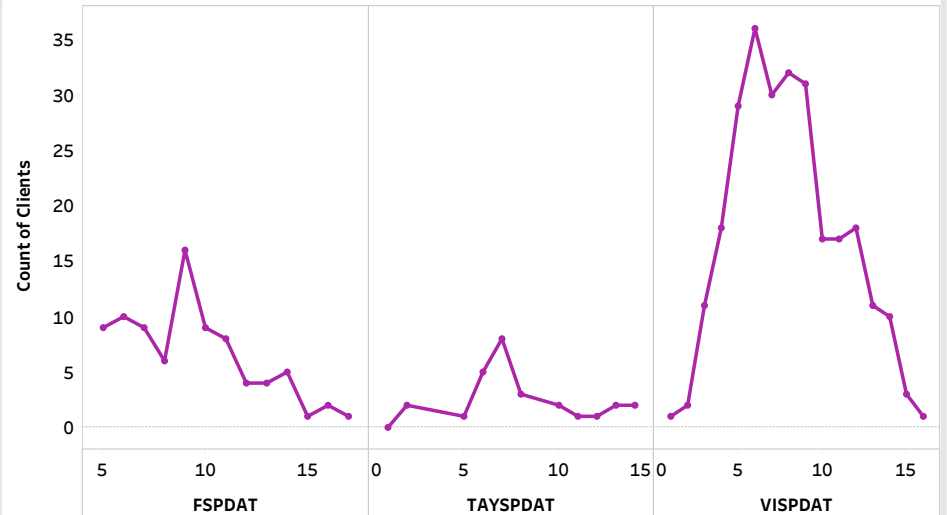
Diversion Triage by Race



Diversion Triage by Referral Ranking



Diversion Triage by SPDAT Score





ACCESS

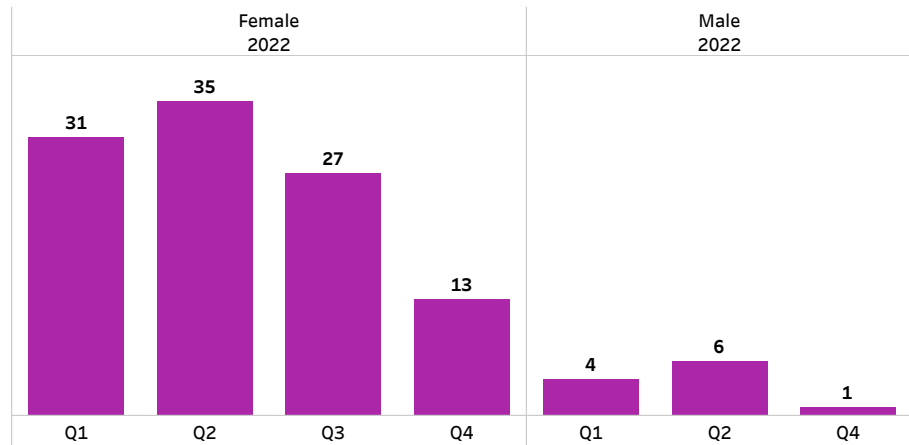
Homeless Prevention (HP) Triage Summary:

Date of Service Jan - Dec 2022

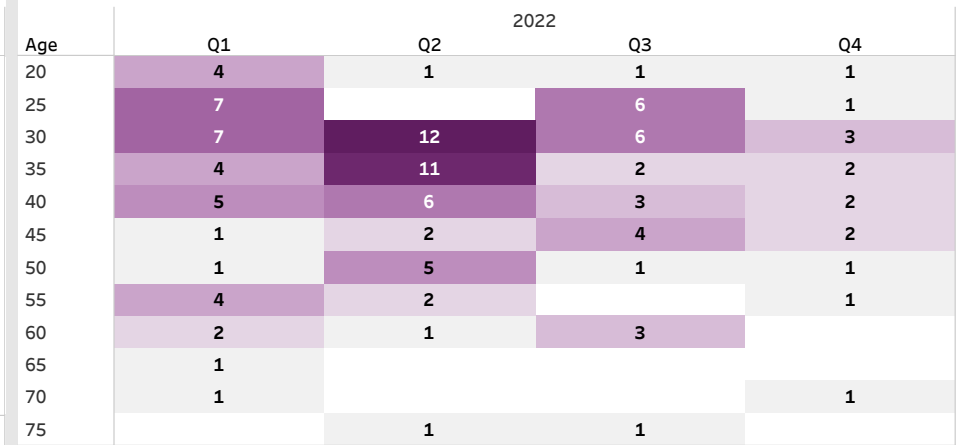
HP Triage by Population Type

Total 2022				Family Household 2022				Single Adult 2022				Veteran 2022			Youth 2022			
Q1	Q2	Q3	Q4	Q1	Q2	Q3	Q4	Q1	Q2	Q3	Q4	Q1	Q2	Q3	Q1	Q2	Q3	Q4
37	43	28	15	27	31	20	12	10	11	7	2	2	1	1	4	3	1	1

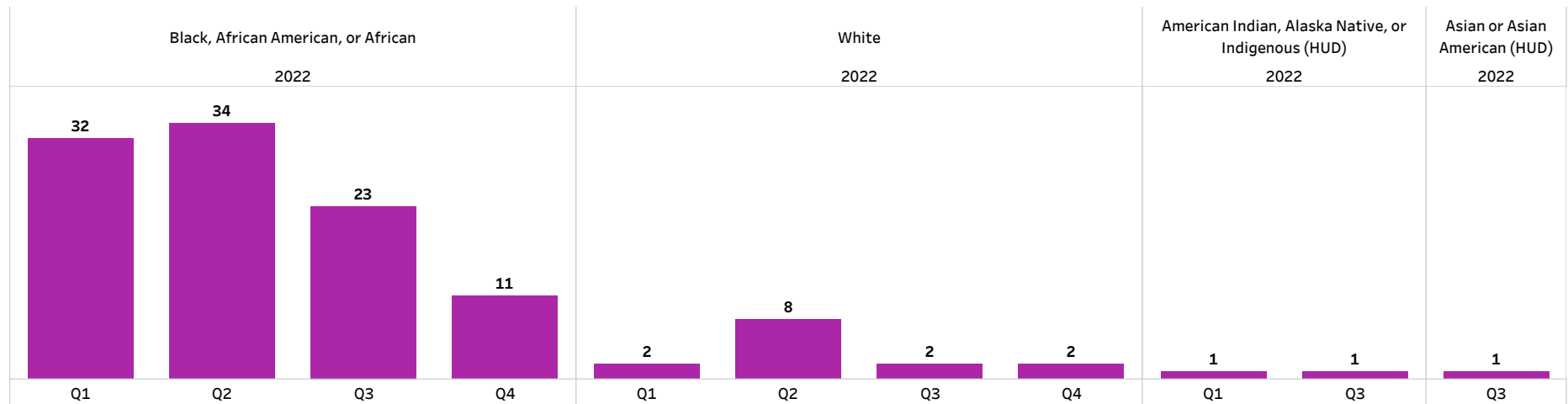
HP Triage by Gender



HP Triage by Age Group



HP Triage by Race

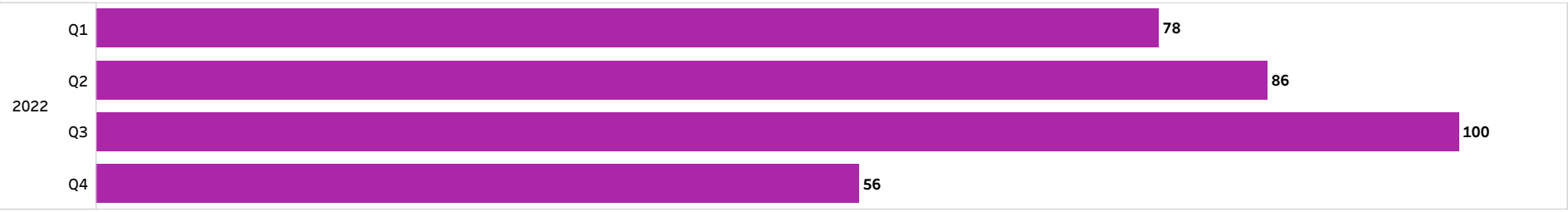




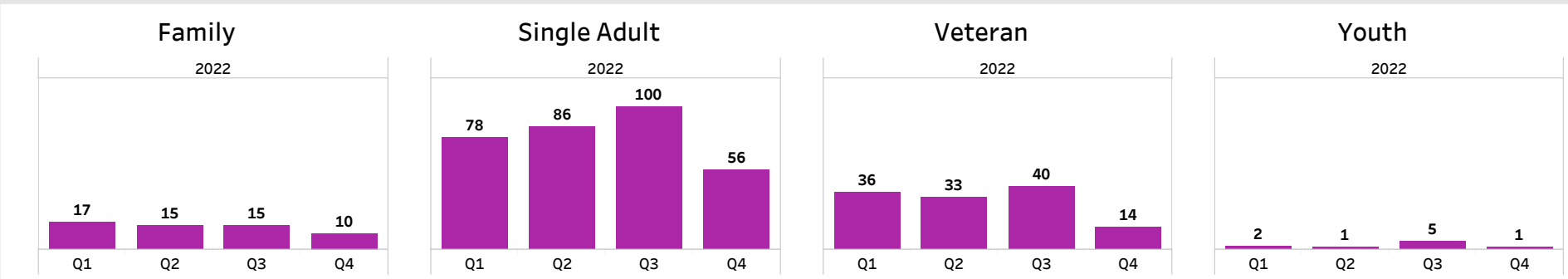
PRIORITIZATION

Available Rapid Re-Housing (RRH)/ Permanent Supportive Housing (PSH) Resource
 Summary: Date of Service Jan-Dec 2022

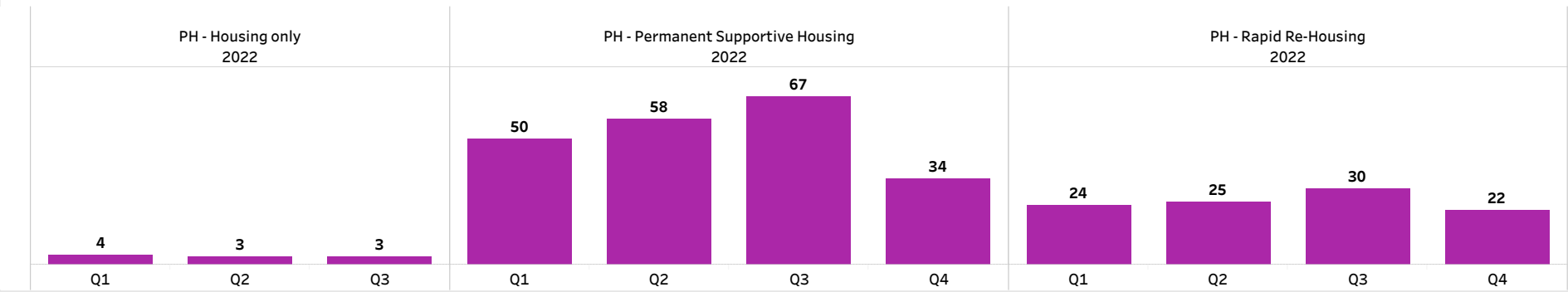
Total RRH/PSH Resources Available



Total RRH/PSH Resources by Population Type



Resources Available by Project Type



Available Resources: Defined as the total number of RRH/PSH resources that became available during the time period. Calculated by measuring the number of clients that have an entry into a program and has 1) Housing move-in date, 2) No housing move-in date, but a positive exit destination, or 3) No housing move-in date and no program exit



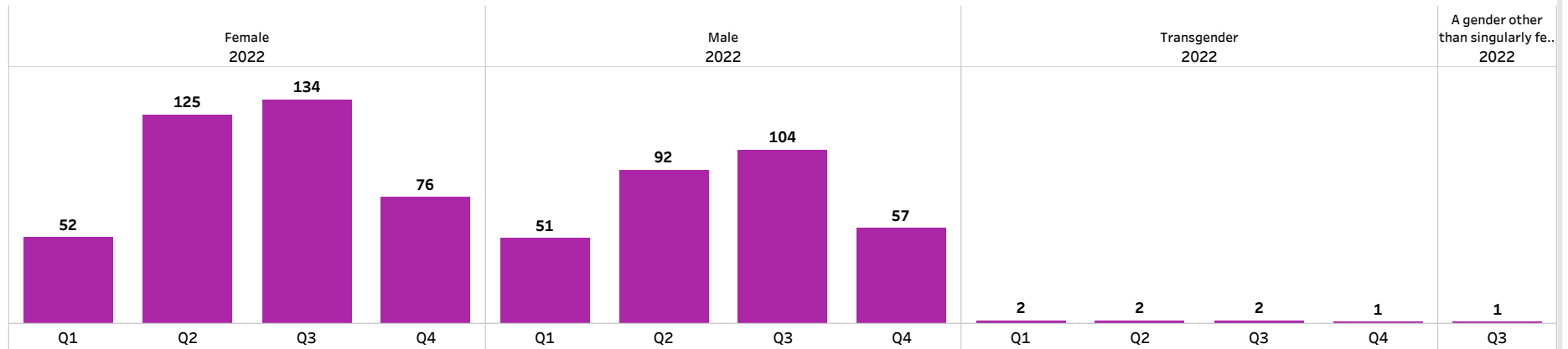
PRIORITIZATION

Prioritization Summary: Date of Service Jan-Dec 2022

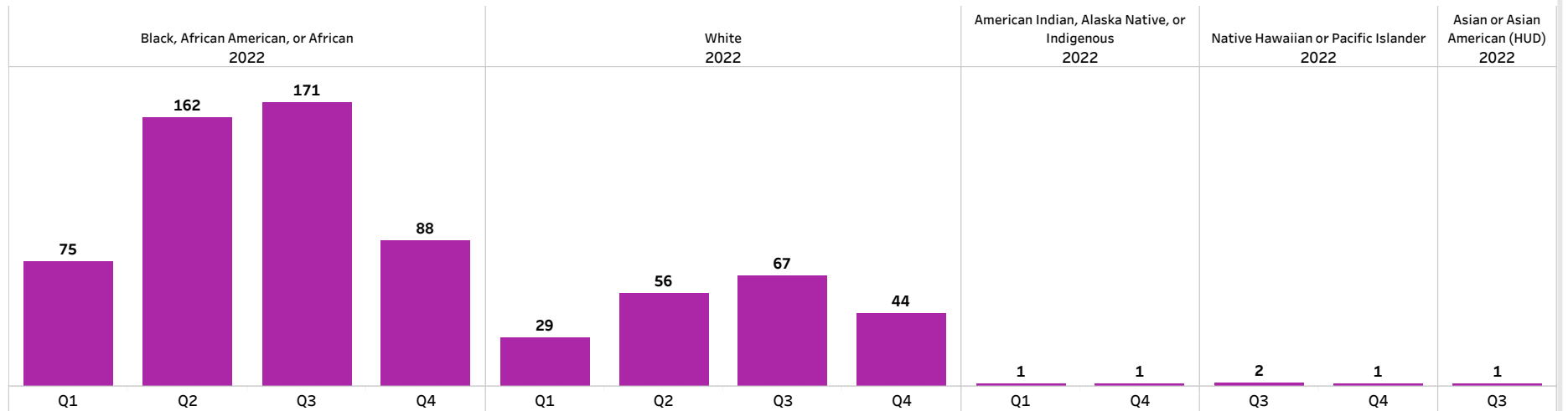
Prioritization by Population Type

Total 2022				Family Household 2022				Single Adult 2022				Veteran 2022				Youth 2022			
Q1	Q2	Q3	Q4	Q1	Q2	Q3	Q4	Q1	Q2	Q3	Q4	Q1	Q2	Q3	Q4	Q1	Q2	Q3	Q4
105	219	241	134	22	81	65	43	75	126	166	78	5	4	9	8	13	25	34	18

Prioritization by Gender



Prioritization by Race

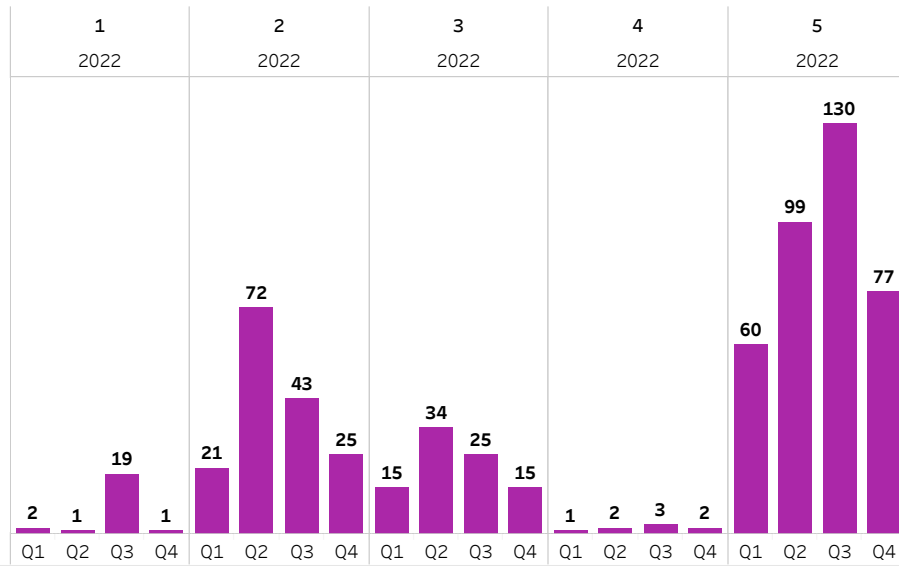




PRIORITIZATION

Prioritization Summary: Date of Service Jan-Dec 2022

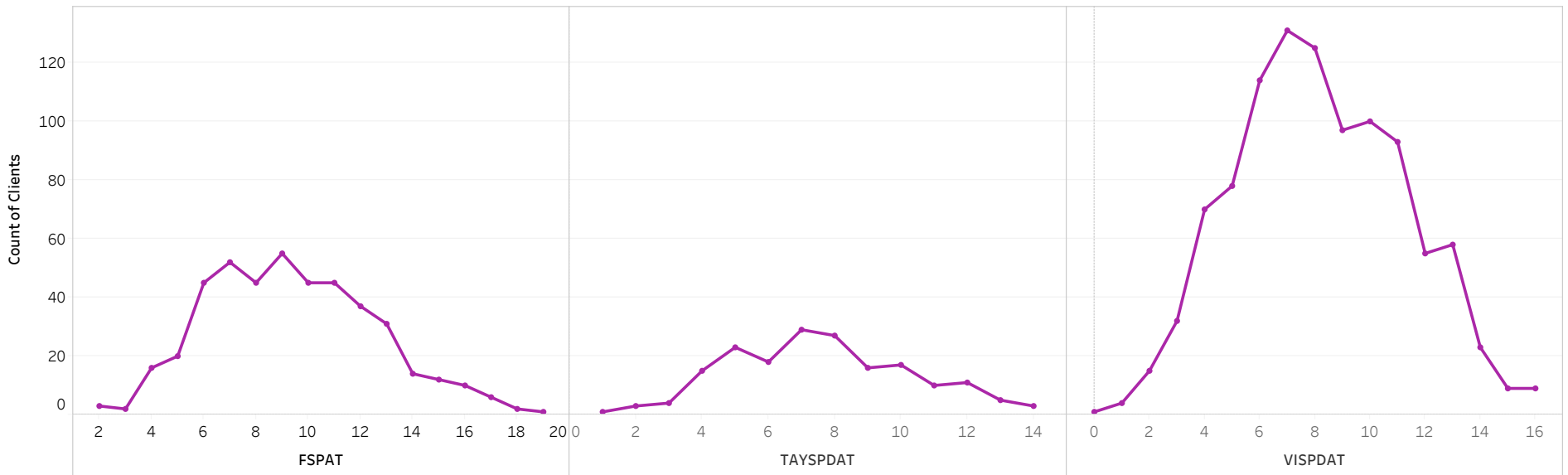
Prioritization by Referral Rank



Prioritization by Age Group

Age at Entry	2022			
	Q1	Q2	Q3	Q4
15	3	5	7	3
20	10	20	27	15
25	7	17	28	10
30	9	33	27	19
35	14	37	30	19
40	13	19	38	22
45	13	20	17	8
50	7	27	25	10
55	16	19	21	17
60	8	17	14	7
65	3	3	1	2
70	1		3	2
75	1	2	2	
80			1	

Prioritization by SPDAT Score





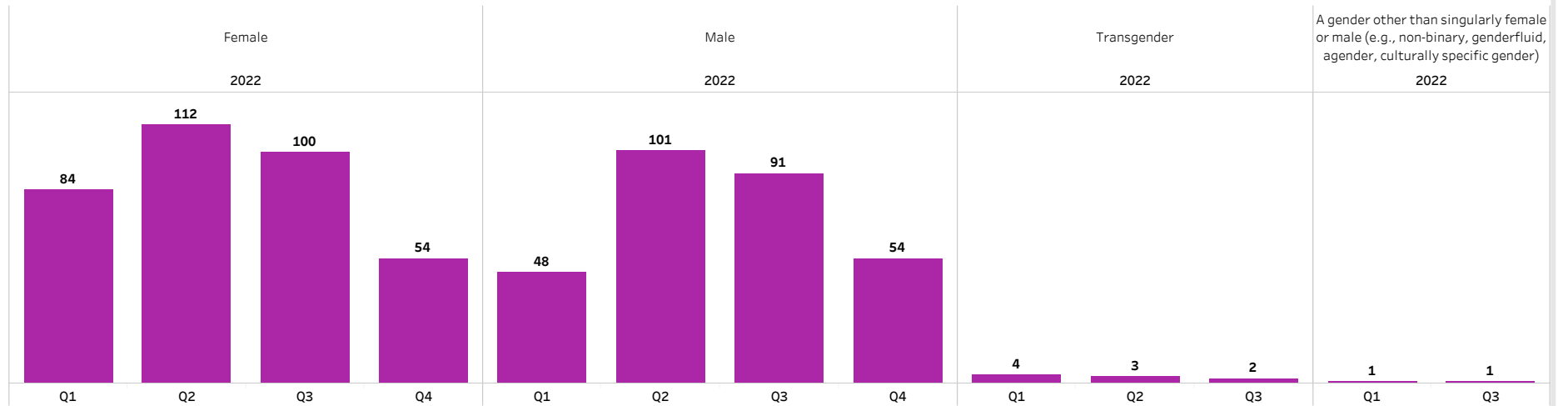
REFERRAL

Referral Summary: Referral Date Jan-Dec 2022

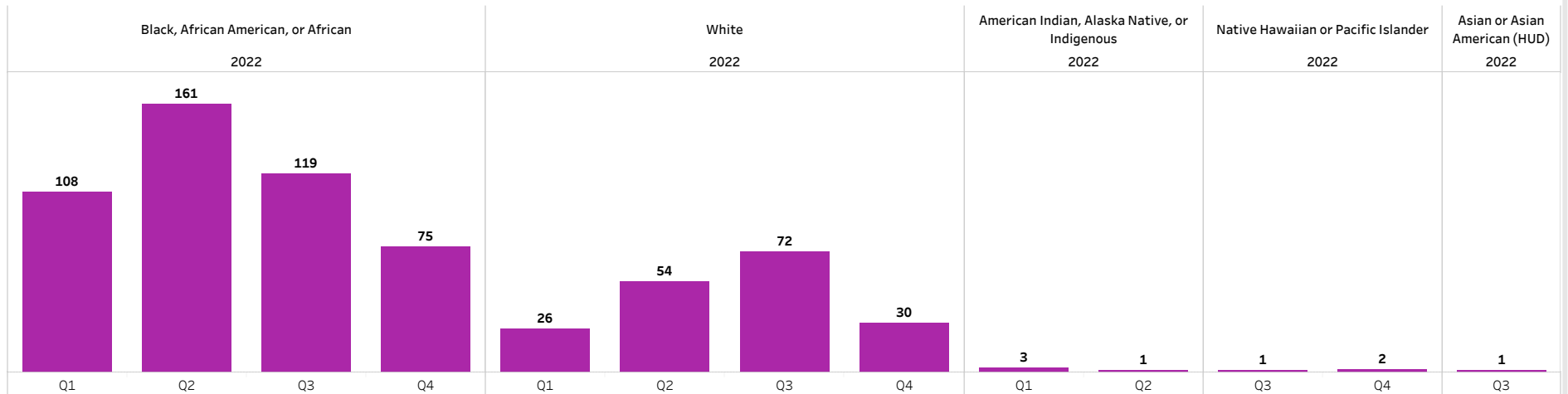
Number of Referrals by Population Type

Distinct Members				Distinct Family Household				Distinct Single Adult				Distinct Veteran				Distinct Youth			
2022				2022				2022				2022				2022			
Q1	Q2	Q3	Q4	Q1	Q2	Q3	Q4	Q1	Q2	Q3	Q4	Q1	Q2	Q3	Q4	Q1	Q2	Q3	Q4
137	216	194	108	49	62	48	21	81	144	135	81	3	8	6	2	21	21	24	10

Number of Referrals by Gender



Number of Referrals by Race

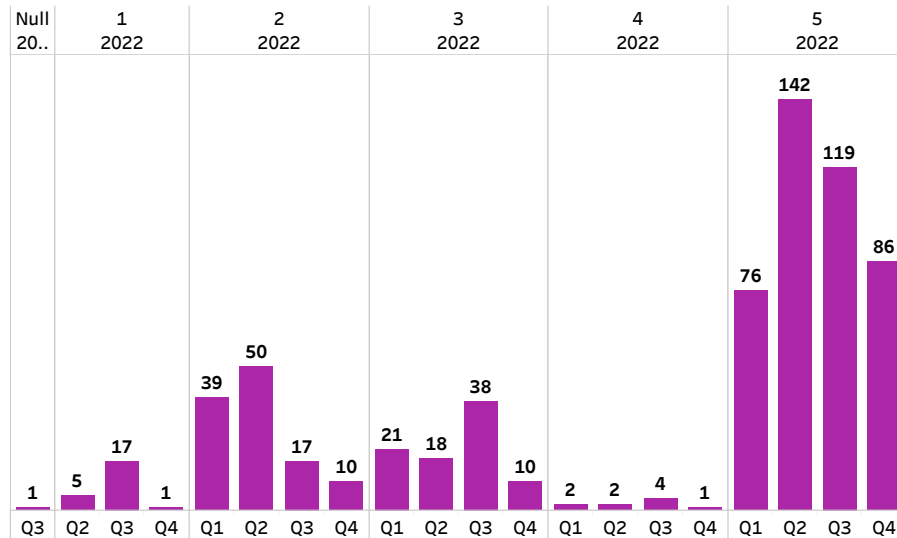




REFERRAL

Referral Summary: Referral Date Jan-Dec 2022

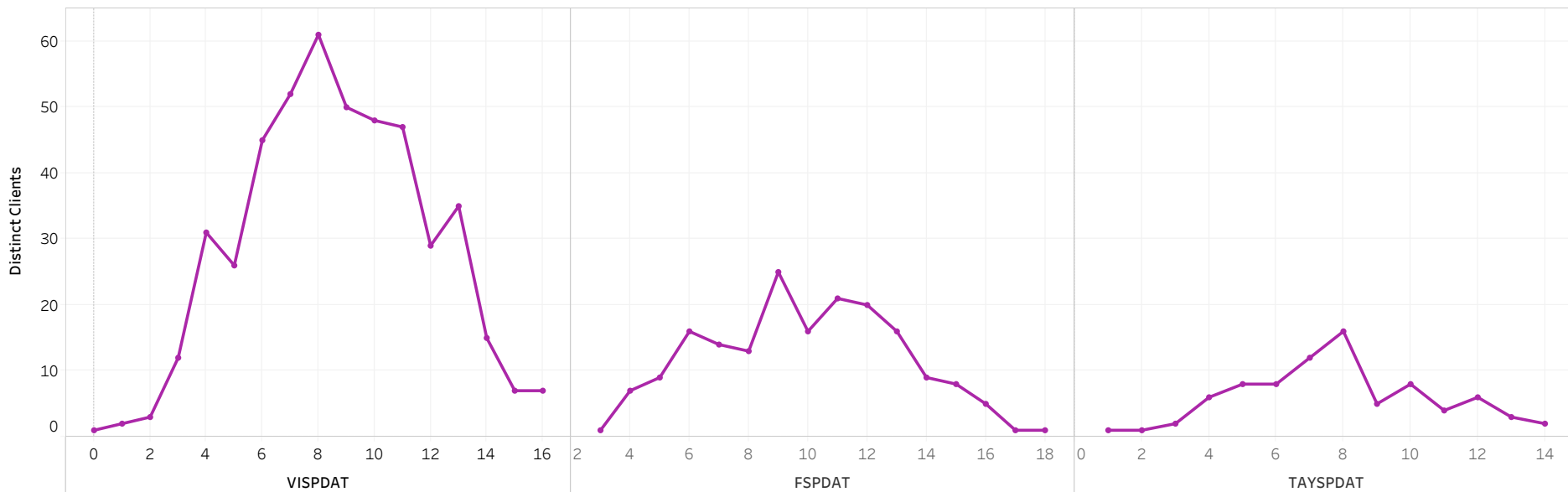
Number of Referrals by Referral Rank



Number of Referrals by Age Group

Age	2022			
	Q1	Q2	Q3	Q4
15	4	5	5	1
20	21	21	22	12
25	16	9	15	13
30	13	25	21	13
35	21	29	28	21
40	17	25	27	15
45	10	18	16	7
50	11	24	22	11
55	12	28	21	8
60	8	25	11	7
65	3	6	3	
70		1	1	
75	1	1	2	
80				1

Number of Referrals by SPDAT Score





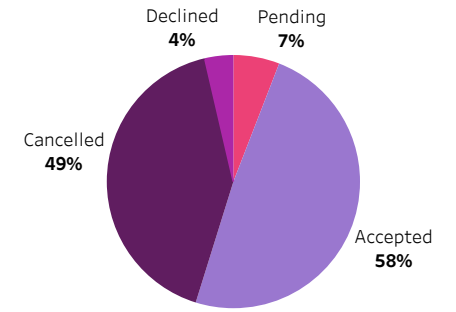
REFERRAL

Referral Outcomes: Referral Date Jan-Dec 2022

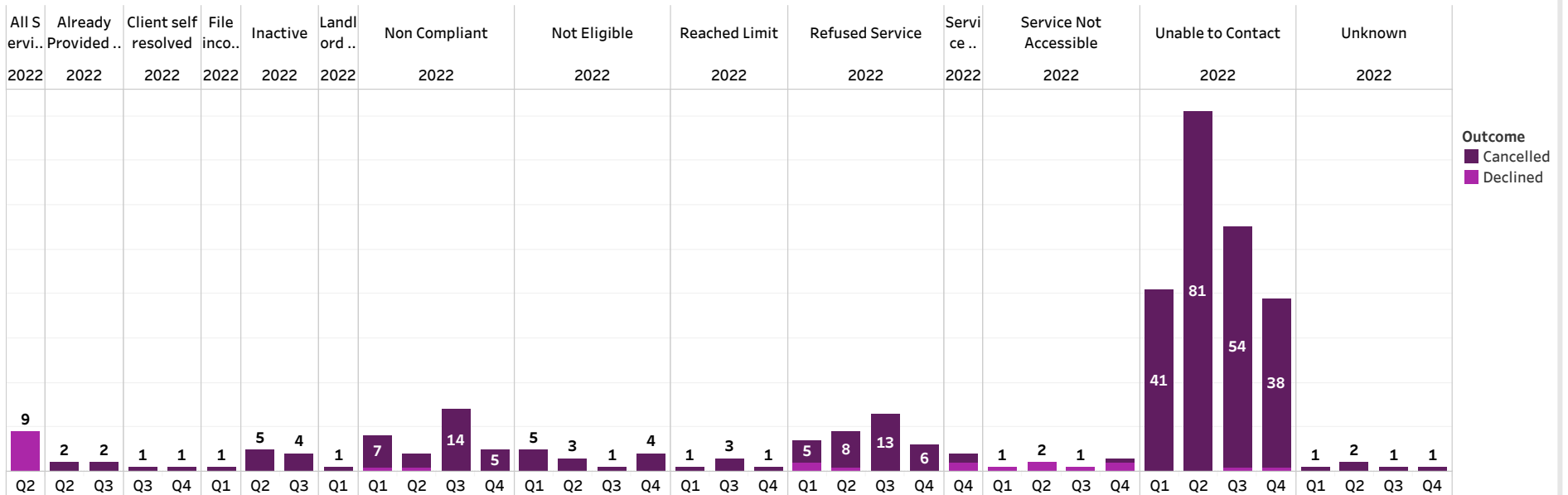
Number of Referrals by Outcome



Referral Outcome Percents



Reason Referral was Unsuccessful





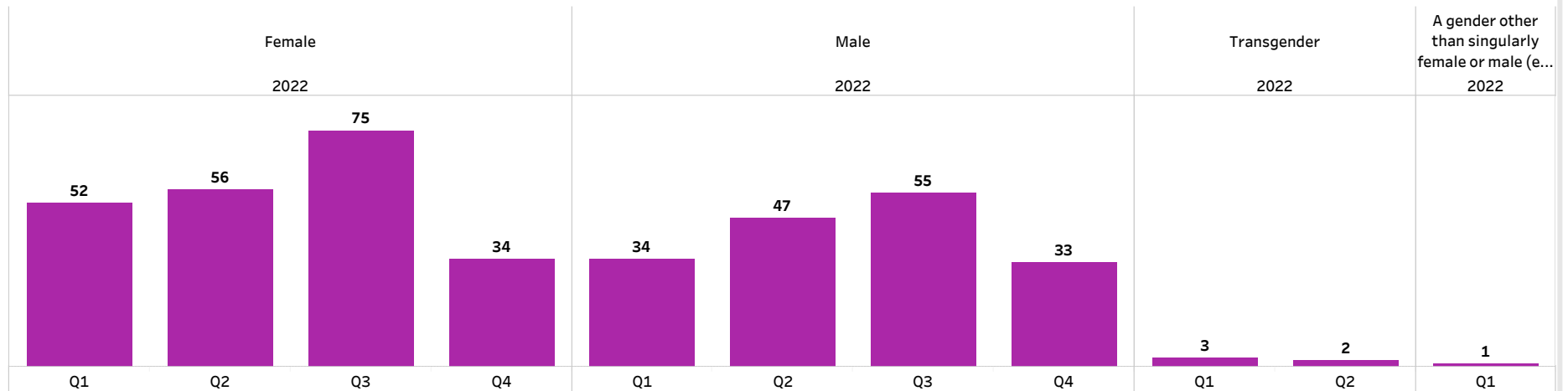
REFERRAL

Referrals Leading to Program Enrollment: Referral Date Jan-Dec 2022

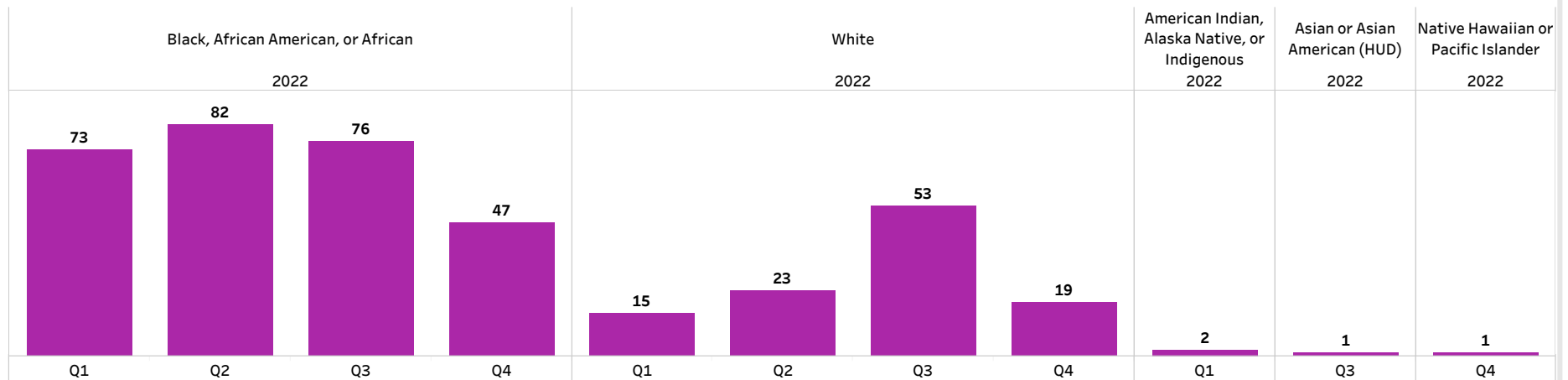
Program Enrollment by Population Type

Total 2022				Family Household 2022				Single Adult 2022				Veteran 2022				Youth 2022			
Q1	Q2	Q3	Q4	Q1	Q2	Q3	Q4	Q1	Q2	Q3	Q4	Q1	Q2	Q3	Q4	Q1	Q2	Q3	Q4
90	105	130	67	34	31	37	12	51	68	88	51	2	3	4	1	12	8	13	7

Program Enrollment by Gender



Program Enrollment by Race





REFERRAL

Referrals Leading to Program Enrollment: Referral Date Jan-Dec 2022

Average Number of Referrals before Enrollment

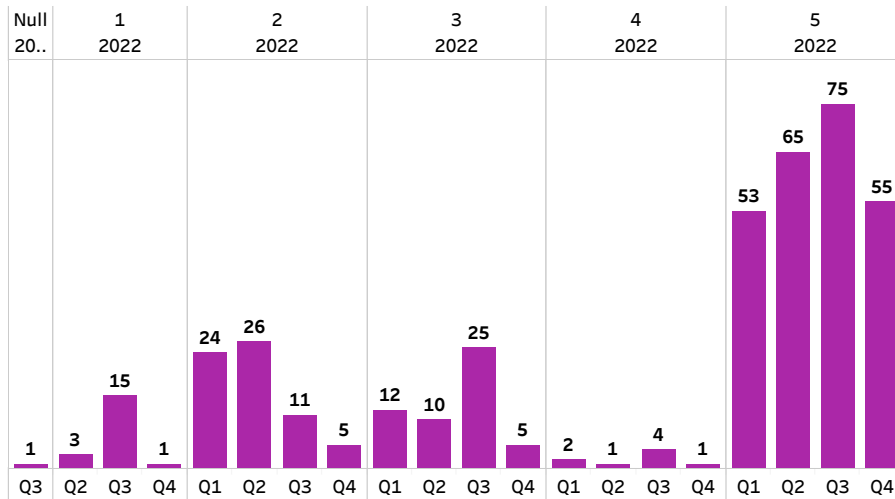
3

Average Time Spent on Prioritization List before Enrollment

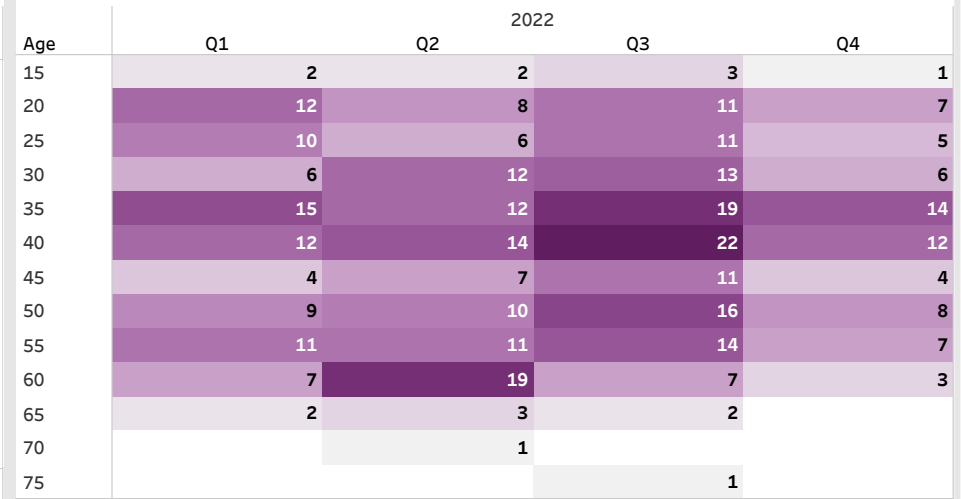
(Coordinated Entry to Program Enrollment)

105 Days

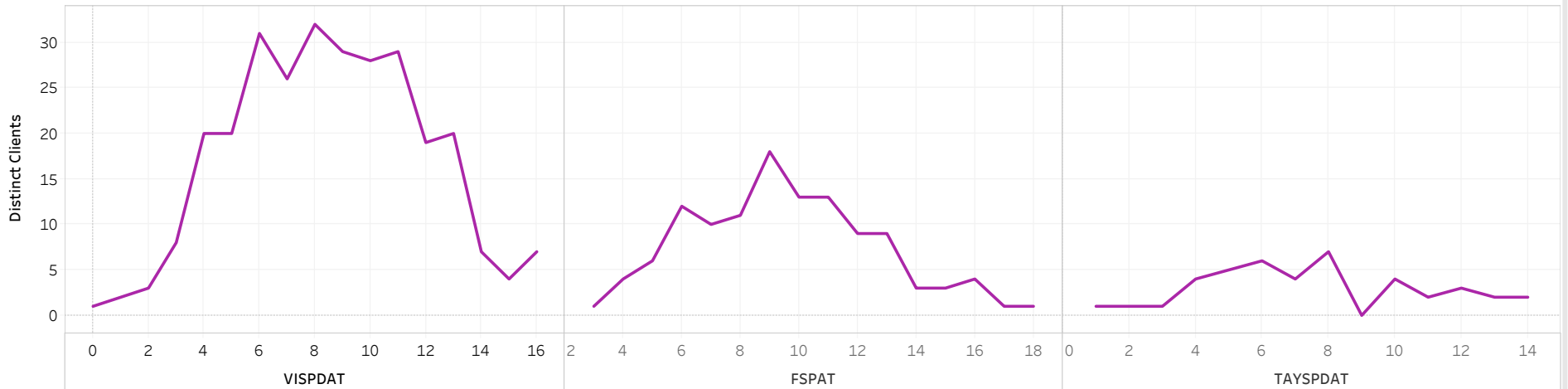
Program Enrollment by Referral Ranking



Program Enrollment by Age Group



Program Enrollment by SPDAT Score



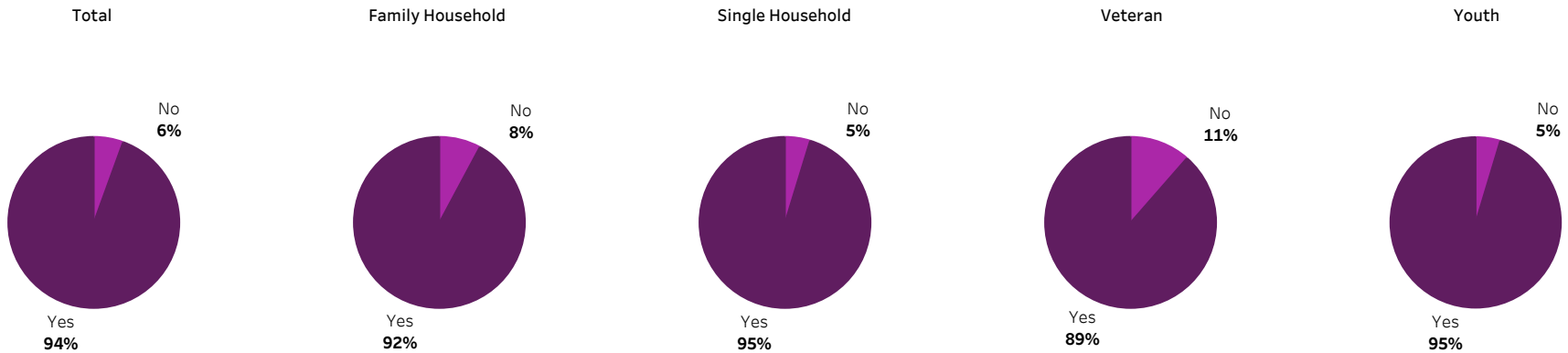


PROGRAM OPERATIONS

Program Operations: Referral Date Jan-Dec 2022

	Total	Family Household	Single Household	Veteran	Youth	Rapid Re-Housing	Permanent Supportive Housing
Average Days between Referral and Follow Up Date	14	13	14	15	18	16	10
Average Days between Referral and Housing Move-In Date	99	528	44	58	124	152	40

Number of Acknowledged Referrals by Population Type



Number of Acknowledged Referrals by Project Type

